

Document No: SB001-P3

Revision No:

Last Updated: March 18, 2003

Software Version: P3 – Version 3.0

Author: Eric Chou

BRIEF

Here is a detailed Barchart schedule as shown below, which are grouped by Phase for one project. As we know, P3 can easily summarize them into the groups (See **Figure 2**). However, it would not be that same story to turn these stacked bars into one continuous and “colorful” bar as shown on **Figure 3**. Here is a way to do that:

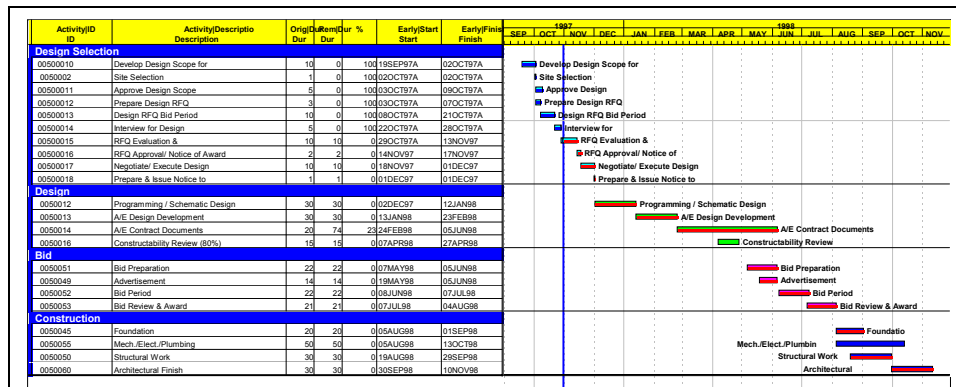


Figure 1

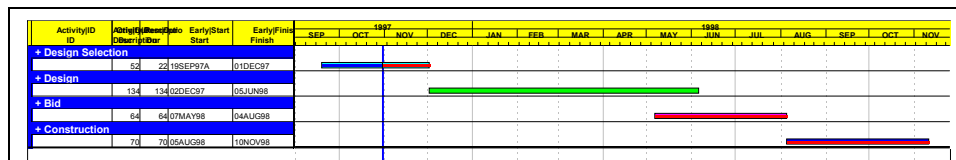


Figure 2

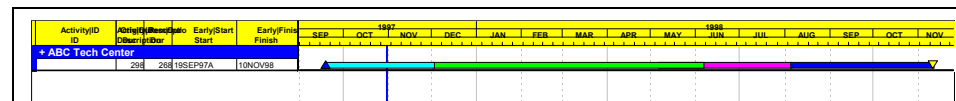


Figure 3

Document No: SB001-P3

Revision No:

Last Updated: March 18, 2003

Software Version: P3 – Version 3.0

Author: Eric Chou

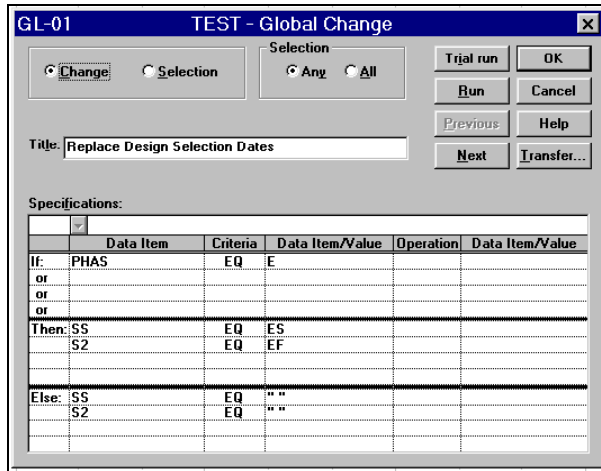


Figure 5

3. Format Bars

- Go to Bars Format Dialog Window and add (Define) these four bars as shown on **Figure 6**. Make sure to “Uncheck” Early Bar under **Visible**, “Check” Early Bar under **Key** and Position these four bars on Pos “2”.
- Once bars are added, Click **Modify** to modify Bar definition as shown on **Figure 7** for each Bar.

For Design Selection Bar Define	ES (Early Start) as Start Point S2 (Desn Sel Finish) as End Pont
For Design Bar Define	DS (Desn Start) as Start Point DF (Desn Finish) as End Pont
For Bid Bar Define	BS (Bid Start) as Start Point BF (Bid Finish) as End Pont
For Construction Bar Define	CS (Const Start) as Start Point EF (Early Finish) as End Pont

Also, define Bar Color for each bar as any color you want

Document No: SB001-P3

Revision No:

Last Updated: March 18, 2003

Software Version: P3 – Version 3.0

Author: Eric Chou

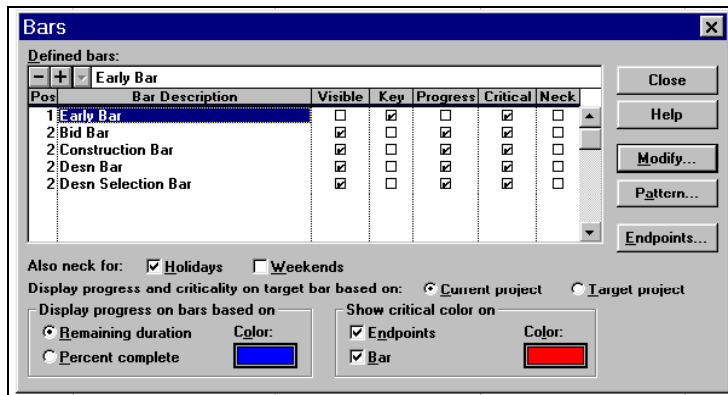


Figure 6

4. After finish formatting Bars, **Summarize** or **Organize** All bands by Project (one Level above Phase). Then you will see all stacked bars being bridged as on continuous bar with different color for each phase.

Document No: SB001-P3

Revision No:

Last Updated: March 18, 2003

Software Version: P3 – Version 3.0

Author: Eric Chou

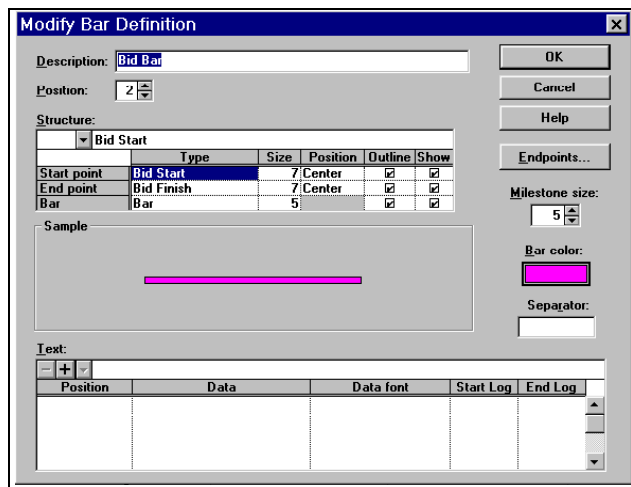


Figure 7

Final Words:

- However, due to the limitation of Adding Custom Data Item (8, maximum) you can only bridge four bars together maximum.
- Bridged color bars do not look clear in B&W copy. If you need to print out them in B&W, use End Point Manager to enhance the presentation.
- If there is an overlap between bars, the previous one will automatically top over the succeeding one.
- This presentation is especially useful for the Program Manager, who normally manage a project from inception, design selection, design, bid/award, and construction.