

IN THIS ISSUE

Primavera Project Planner (P3)

■ Version 3.1

Advanced features in the Filter dialog box

by Eric Chou, PE

Often time, we apply a filter simply to replace the existing one as a whole. However, a feature in the filter dialog box can expand your imagination by applying a new filter to append another set of activities to the existing filter or temporarily removed them from the existing filter.

As seen from the **Figure 1**, select “Add activities to the current view” or “Remove activities from the current view” before click **Run** to apply the filter.

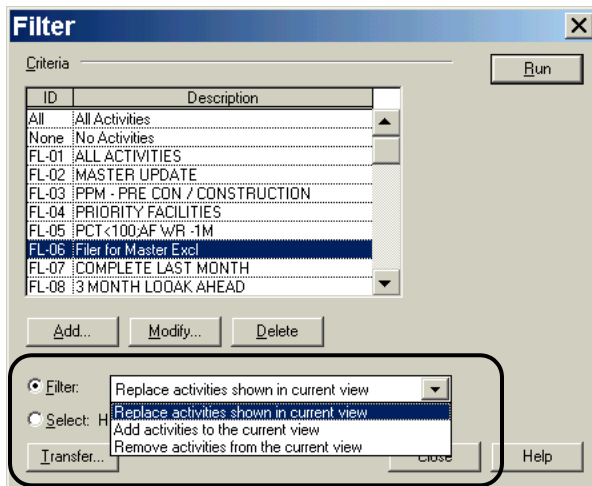


Figure 1

Another nice feature, which has often been overlooked by most users, is the highlighting activities by filter. As seen from the **Figure 2**, select “Highlight activities which match criteria” to highlight certain activities in a layout without changing the set of activities before click **Run** to apply the filter. This is useful when you want to apply a change to a given set of activities or when you want to see how many activities meet certain conditions.

To remove the highlighting, simply choose **Edit, Unselect**.

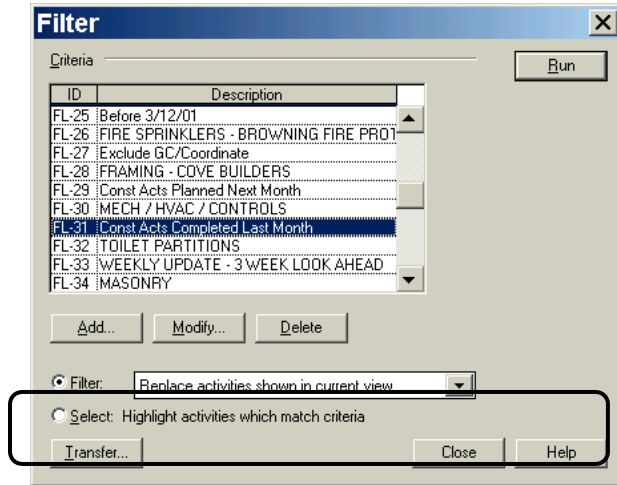


Figure 2